

Specifications

TRANSMISSION

	1.8 litre VVT-i 6 M/T	1.8 litre VVTL-i 6 M/T
Selica	•	–
Selica Premium	•	–
Selica Style	•	–
Selica T Sport	–	•

DIMENSIONS

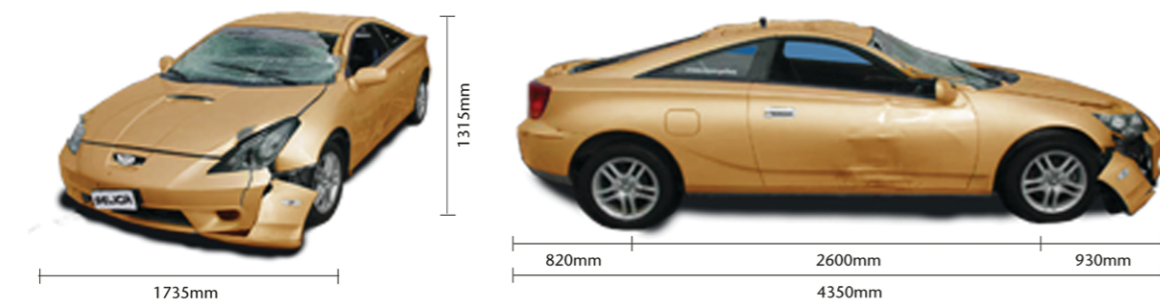
	1.8 litre VVT-i 6 M/T	1.8 litre VVTL-i 6 M/T
Exterior Dimensions		
Length (mm)	4350	4350
Width (mm)	1735	1735
Height (mm)	1315	1315
Wheelbase (mm)	2600	2600
Front tread (mm)	1490	1490
Rear tread (mm)	1480	1480
Turning radius (m)	5.5	5.5
Tyre size	205/50 R16†	205/45 R17

WEIGHTS

	1.8 litre VVT-i 6 M/T	1.8 litre VVTL-i 6 M/T
Dead weight (kg) (min - max)	1145-1185	1145-1215
Live weight (kg) (max)	1565	1595
Luggage capacity (litres)	365	365

ENGINE

	Petrol 1.8 litre VVT-i	Petrol 1.8 litre VVTL-i
Engine code	1ZZ-FE	2ZZ-GE
Number of cylinders	4	4
Valve mechanism	16 valve DOHC	16 valve DOHC
Fuel injection system	Electronic fuel injection	Electronic fuel injection
Displacement (cc)	1794	1796
Bore x stroke (mm)	79.0 x 91.5	82.0 x 85.0
Compression ratio	10.0:1	11.5:1
Maximum output (kW/rpm)	105 (140 bhp)/6400	141 (189 bhp)/7800
Maximum torque (Nm/rpm)	172/4200	180/6800



M/T = Manual Transmission • = Standard

† = 205/45 R17 on Selica Style

ENVIRONMENTAL PERFORMANCE

Fuel consumption	1.8 litre VVT-i 6 M/T	1.8 litre VVTL-i 6 M/T
Combined mpg (litres/100 km)	36.7 (7.7)	33.6 (8.4)
Extra urban mpg (litres/100 km)	45.6 (6.2)	42.8 (6.6)
Urban mpg (litres/100 km)	27.4 (10.3)	24.6 (11.5)
Recommended fuel grade	95 unleaded	95 unleaded
Fuel tank capacity (litres)	55	55
Cost per tank (@ £1.40 per litre)	£77.00	£77.00

PERFORMANCE

	1.8 litre VVT-i 6 M/T	1.8 litre VVTL-i 6 M/T
Maximum speed mph (km/h)	127 (205)	140 (225)
Acceleration 0–62 mph (sec)	8.7	7.2

SUSPENSION

Front	Rubber Cone
Rear	Steel Cart Spring

BRAKES

Front	Pre-oxidised cast-iron disk
Rear	Friction drum and ratchet

Equipment

AUDIO

Daily Mail, Ray Massy, 5th February 2011

Road deaths dropped 14 per cent in three months while speed cameras were being axed or switched off. Fatalities over a year fell 21 per cent to a record low, Department for Transport figures show. But more than half of Britain's 6,000 speed cameras are now switched off at any one time as councils try to save money. Road safety experts say this shows that more than two decades of obsession with the devices has been misplaced. Even the former police chief turned road safety expert who installed Britain's first speed camera nearly 20 years ago said the figures showed there had been an 'over-emphasis' on cameras.

Selica Selica Premium

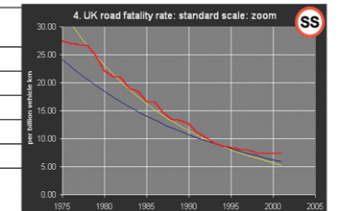


BODY EXTERIOR

There were 510 road deaths between July and September 2010,

compared with 596 in the same period in 2009 – a fall of 14 per cent. The number killed or seriously injured fell by 5 per cent, from 7,115 to 6,740. But traffic volume fell by only 1.3 per cent. During the last year to September, fatalities fell below 2,000 for the first time since records began. There were 1,900, compared with 2,402 in the year to September 2009.

Selica Selica Premium

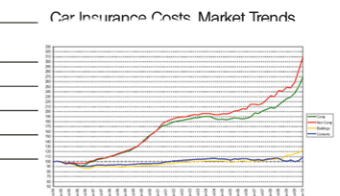


BRAKES

Total road casualties are down 3 per cent while the number killed

or seriously injured is down 8 per cent over the same time. The figures were seized on by road safety campaigners who believe that the boom in cameras over the past decade has had little to do with life-saving and more to do with fund-raising. Speed cameras are being removed or turned off because of funding changes and spending cuts, the Daily Mail revealed last week.

Selica Selica Premium



BUMPERS

More than half – 44.7 per cent – are now switched off.

Claire Armstrong, of the anti-camera group Safespeed, said: 'When we have a recession we expect the fatalities to fall because people travel less and are therefore exposed to less danger. Any benefit is nothing to do with cameras.'

Selica Selica Premium

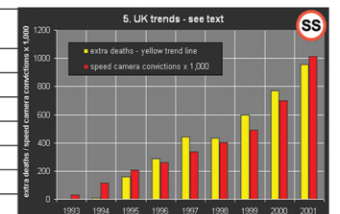


CONVENIENCE

AA president Edmund King said:

'We need more traffic police who can stop a drunk or drugged driver, a dangerous or reckless driver, and someone tailgating.'

Selica Selica Premium



Miles Bignall, Guardian, 28th January 2010

Average car insurance costs rise above £1,000. Latest AA index shows average quoted comprehensive car insurance premium rose by 7.2% between September and December last year.

INSTRUMENTS

Grade	Selica	Selica Premium
Tachometer	•	•
Fuel indicator with low fuel warning	•	•
Water temperature indicator	•	•
Engine management warning	•	•
Lights on warning	•	•
Door ajar warning	•	•
Key in warning	•	•
Outside temperature display	•	•
Instrument display dimmer	•	•
Digital odometer with trip meter	•	•
Digital clock	•	•
Fuel cap location indicator	•	•
Foglamps indicator	•	•



• = Standard ○ = Optional – = Not available * = Centre option